



EUROPEAN SCHOOL FRANKFURT

School Year 2020/21

P3, P4 & P5 Plan & Rules

(Effective as of 2.09.2020)

COVID-19 - When are you allowed to come to school?



Arrival

- **Gate A** is open from 8:05 until 8.40.
Late arrival: after 8.40 students should enter the school through Gate C.
- Pupils must go straight to their classrooms.
- Pupils are obliged to follow the hygiene regulations at all times.
- Parents may not enter the school premises.



Arrival Procedures



Pupils wear mouth/nose protection until entering their classrooms.

Pupils must maintain a distance of 1.5 metres from each other when outside of their own classrooms.

After the first week of school, pupils will make their way independently to their classrooms while maintaining the required distance. (P5 may enter independently as of the first day.)

Teachers will be present to supervise and enforce the distance rules as pupils walk to their classrooms.

Mouth/Nose Protection (Masks)



Mouth/nose protection is mandatory:

- on public transport on the way to school;
- in the hallways;
- in mixed classes (e.g. L2, L1-MTT, Religion, Ethics and European Hours);
- during the breaks.

Mouth/nose protection (masks) **need not be worn** in the home classroom.

General Hygiene Rules

Disinfect hands from the dispensers in the hallways before entering the classroom.



Wash hands thoroughly after using the toilet.




The school is responsible for providing sufficient liquid soap and disposable towels.

General Hygiene Rules

Hygiene Etiquettes

Hand washing etiquette

 Duration of the entire procedure: 20-30 seconds

1a



Apply a palmful of the product in a cupped hand, covering all surfaces;

1b

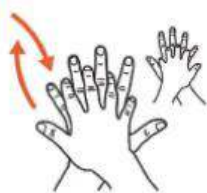


2



Rub hands palm to palm;

3



Right palm over left dorsum with interlaced fingers and vice versa;

4



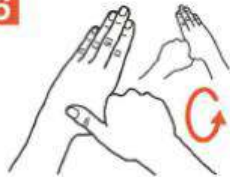
Palm to palm with fingers interlaced;

5



Backs of fingers to opposing palms with fingers interlocked;

6



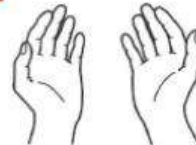
Rotational rubbing of left thumb clasped in right palm and vice versa;

7



Rotational rubbing, backwards and forwards with clasped fingers of right hand in left palm and vice versa;

8




Once dry, your hands are safe.

Observe proper
handwashing
technique.

General Hygiene Rules

Sneezing/Coughing etiquette



1.

Sneeze and cough hygienically

Keep it with you!

Do not sneeze or cough in your hand, but in the crook of your arm or in a paper handkerchief. And keep your distance from the other children.



2.

Nose inside

Use a paper handkerchief to blow your nose. But only once!



3.

Get rid of it!

- Don't let tissues lie around.
- Do not put in your pants or skirt pocket
- Do not collect.



4.

Off to the bucket!

Tissues must be put in the trash bin. Close the lid and you're done.



+ One more tip:

When you have a cold, wash your hands frequently.

Observe
sneezing & coughing
etiquette.

General Hygiene Rules

Frequent and proper ventilation of classrooms is important (at least three times a day for ten minutes).



Do not touch, hug or shake hands.



Upstairs/Downstairs



Foyer Stairs (up)

Use these stairs to go up in the morning and when returning inside after breaks.

Stay to the right.

Keep 5 steps distance between pupils.

Emergency Exit Stairwell (down)

Use these stairs to go down at breaktime and at the end of the day. **Stay to the right.**

Keep 5 steps distance between pupils.



Organisation of Breaks



- Each class will be assigned a separate area of the playground for break. The assigned areas will be rotated on a regular basis. Class teachers must accompany their pupils to the assigned break area.
- No ball games are allowed. The play equipment may be used while maintaining 1,5 metres distance.
- At the end of the break, school staff will help the children line up by class in the school yard. The class teacher will pick them up outside and accompany the class back to the classroom.
- A supervision duty schedule has been prepared.

Rainy Days- “Regenpause”



Children must stay in their own classrooms during break when it rains.

Canteen

- MenüPartner will begin its meal service on Monday, 7. 9. 2020. Until then, pupils staying all day bring their lunches.
- Pupils should bring water in plastic/metal bottles marked with their names.
- Health regulations prohibit us from placing pitchers of water on the tables for sharing.
- Pupils eat lunches in their classrooms or the canteen on a rotating basis at the following times:

Classes	Lunch	Break
P3	12.00 – 12.20	13.05 – 13.30
P4	12.50 – 13.10	13.10 – 13.30
P5	13.10 – 13.30	12.50 – 13.10

Physical Education and Music

Physical Education

Physical education and physical activity can take place under certain protective measures.

Physical education is organised in groups. **Outdoor activities are prioritised.**

Direct physical contact is to be reduced to a minimum.

Mouth/nose protection is to be worn in the changing rooms.

Music

The playing of wind instruments is not permitted at school. It is also not permitted for pupils to sing together in closed rooms.



Choir will not take place during this period.

School Trips, Events and Meetings



School trips, teaching trips and school excursions are not allowed during this phase.

School events

are postponed or cancelled.

Back-to-School Parent Evenings 2020

P3: Wednesday, 23. 9. 2020 at 18.00

P4: Thursday, 24. 9. 2020 at 18.00

P5: Monday, 28. 9. 2020 at 18.00

Meetings

Only essential meetings will be held, if possible in situ, or alternatively per Teams.



Risk Groups

Pupils who are at risk for a severe course of Covid can generally attend in situ teaching if special hygiene measures can be organised for them.

However, it is possible for at-risk-pupils to be exempted from the obligation to attend in situ teaching.

A medical certificate must be presented for exemption to be granted.

Alternative forms of teaching will be offered to pupils who receive exemption.

More Details...

The Primary School **library** will be open according to a modified plan.



P3-P5 pupils hang up their jackets on the racks in the hallways. They should change from outdoor shoes into slippers before entering the classroom.

It is very important to follow these rules so that each person protects themselves as well as the others.

THE END.